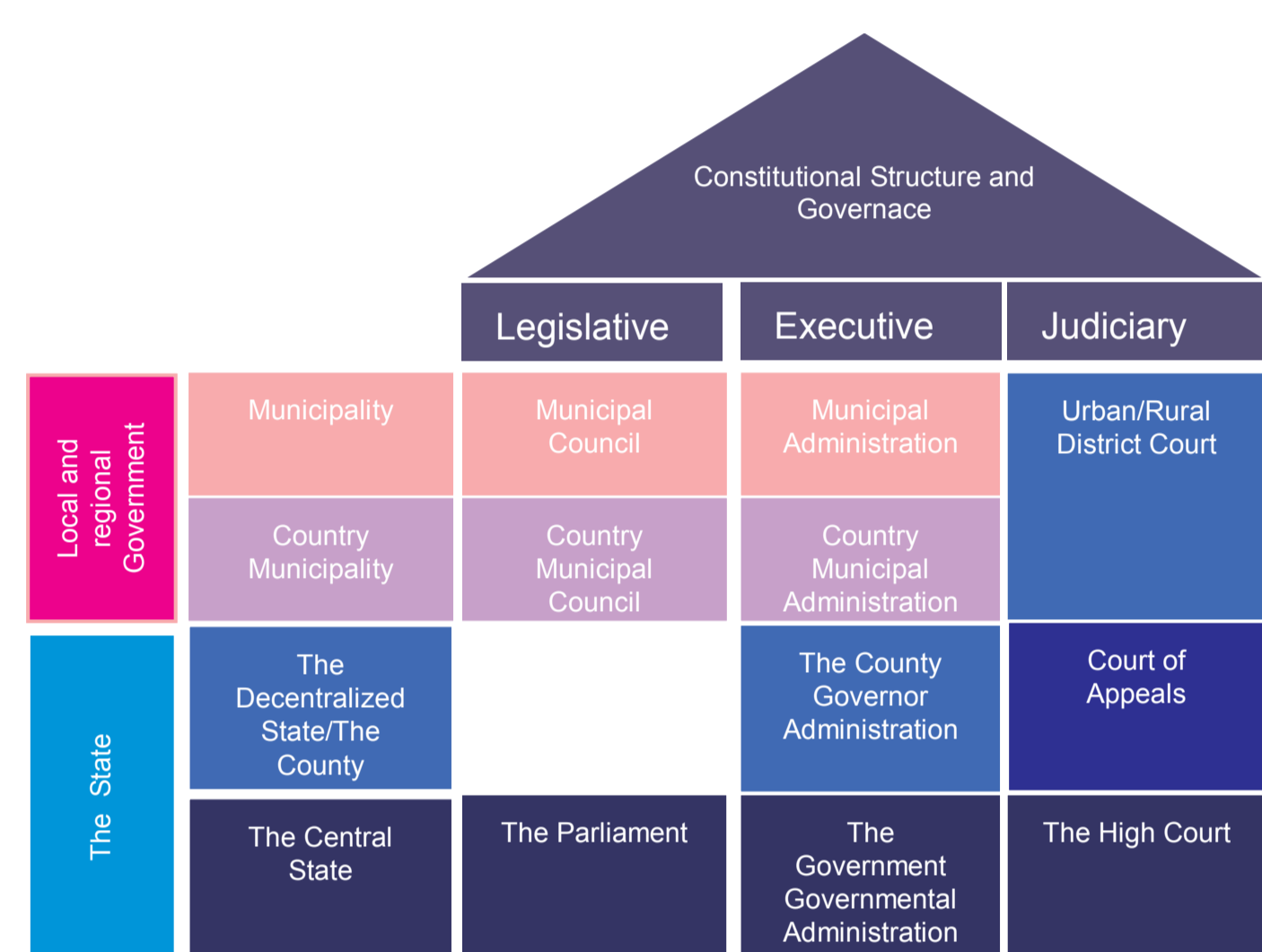


# NORWAY

## PLANNING SYSTEM



## PLANS

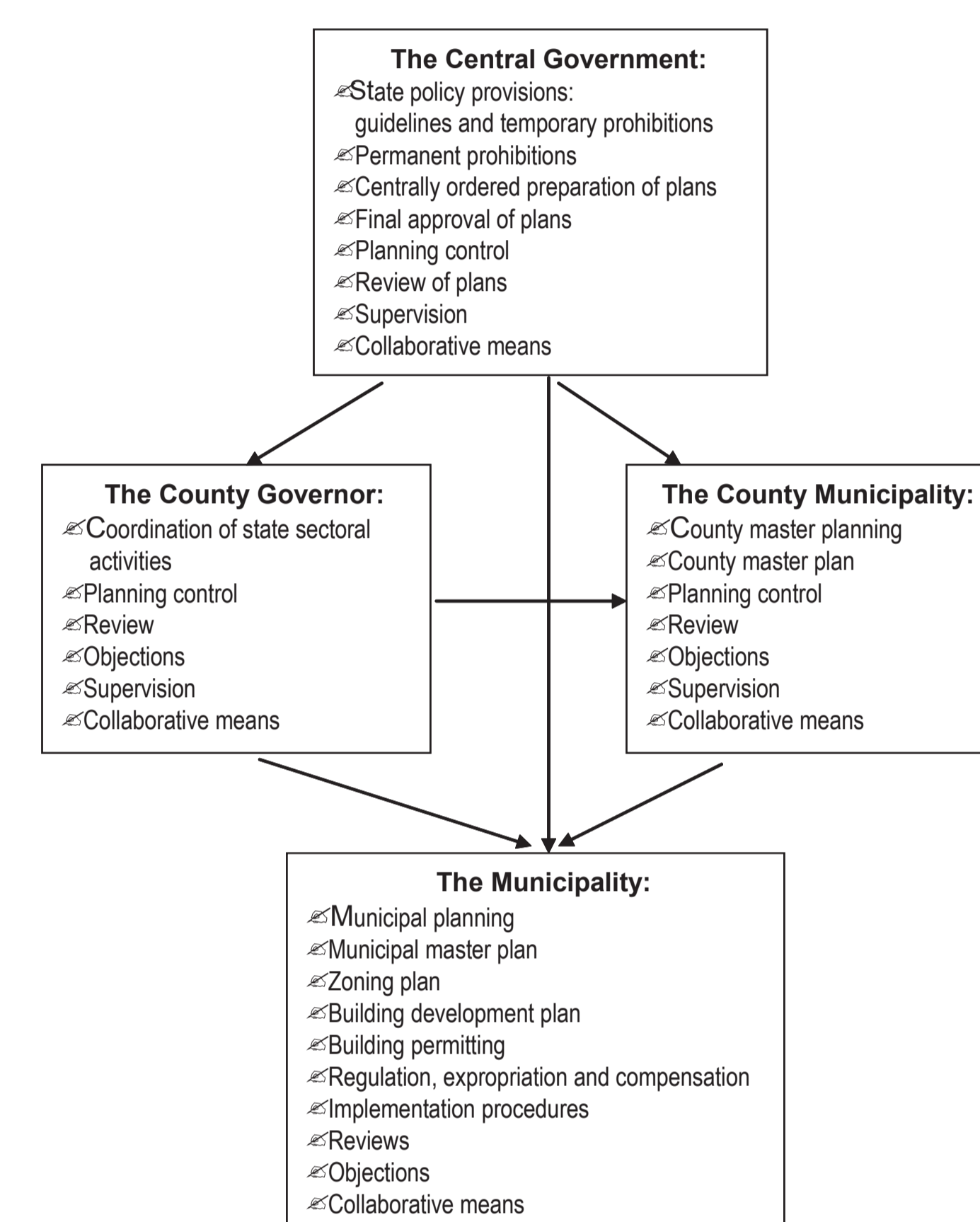


Figure: The planning tiers with main categories of statutory instruments according to the Planning and Building Act.

### Planning authorities

- Elected bodies at central government tier are the supreme authorities within the state part of the Norwegian planning system.
- In the municipal part, at regional and local tiers, the directly elected County Council on behalf of the County Municipality and Municipal Council in the Local Municipality represent the highest planning authorities.
- Planning authorities are unitarily mandated for planning within their specific areas of jurisdiction, which summarize to the main land area in continuity.

### Three planning segments

- Physical planning comprising land use and structural planning connects over all administrative tiers, including the development control at local level.
- Public activity planning is mainly connected to local and regional tiers.
- Regional development planning is executed at meso-levels.

### Instruments within land use planning

- The main instrument in land use planning is the regulatory power in pursuance with the Planning and Building Act.
- The statutory instruments of this power are structured according to the hierarchy of government and the division of labor between the different tiers.
- In summary, three tiers are involved empowered with mandates to command different categories of legal instruments. The hierarchal structure of tiers with related instruments for land use planning is shown in the figure above.

### The partial county master plan

Well-established type of plan, although not a statutory term. It signifies a county master plan, which includes the land use part and the action program of the plan. However delimited, e.g. in the case of southern Rogaland, to 10 municipalities within the territory of the County of Rogaland:

➤ Long-term plan: 2002-2011.

- The County Council will have to review the partial county plan every fourth year for eventual revisions or amendments.

### The partial municipal land use plan

is a well-established type of plan, although not statutory term signifying a municipal master plan in which the land use part and the action program are delimited to a part of the municipal territory, or alternatively a action program for specific areas of activity.

#### Tasks and contents

- Policies and guidelines concerning evaluation of cultural heritage interests, particularly in relation to urban structures from the late nineteenth-century.
- Guidelines for supplementing the existing zoning plan for the central city areas.
- Policies for urban design matters, including public open space.
- Guidelines for supplementing the existing design policies relating to parks, streets and street furniture.
- Zoning in order to enhance possibilities for housing in the central areas of